

**Indiana Commission for Higher Education
2007 High School Graduates
Matriculating to an Indiana Public Institution
from TIPTON HIGH SCHOOL, TIPTON, INDIANA**



Remedial Coursework by High School Diploma Type

	Honors	CORE 40	General	Other/ Unknown	Total
Remedial Math	1	7	5		13
Both Remedial Math & Language			5		5
No Remedial Coursework	30	10	11		51
Total	31	17	21		69

Remedial Coursework Summary

	Headcount	%
Remedial Math	13	19%
Both Remedial Math & Language	5	7%
No Remedial Coursework	51	74%
Total	69	

High School Rank

Quartiles*					
Q-1 Upper 25%	Q-2 26- 50%	Q-3 51- 75%	Q-4 Lower 25%	Not Reported	Total
23	14	22	7	3	69



*Q-1 + Q-2 = Upper 50% Quartile

*Q-1 + Q-2 + Q-3 = Upper 75% Quartile

Ethnicity

White	Black, African American	Hispanic	Other Minority/ Undeclared	Total
68			1	69

Enrollment by Degree Program

	Cert	Assoc	Bachelor	Undeclared	Total
Agriculture, Agriculture Operations, and Related Sciences			2		2
Architecture and Related Services			1		1
Biological and Biomedical Sciences			3		3
Business, Management, Marketing, and Related Support Services			3		3
Communication, Journalism and Related Programs			3		3
Education		3	4		7
Engineering Technologies/Technicians		1	2		3
English Language and Literature/Letters			4		4
Family and Consumer Sciences/Human Sciences			1		1
Health Professions and Related Clinical Sciences		2	8	1	11
History			1		1
Liberal Arts and Sciences, General Studies and Humanities		1	2	1	4
Mathematics and Statistics			1		1
Multi/Interdisciplinary Studies			2		2
Personal and Culinary Services (02 Deleted)		1			1
Public Administration and Social Service Professions			1		1
Security and Protective Services			2		2
Undeclared		5	5	5	15
Visual and Performing Arts		2	2		4
Total		15	47	7	69

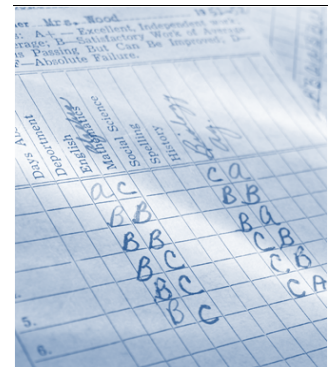
Gender Summary

	Headcount	%
Male	30	43%
Female	39	57%
Total	69	

Status Summary

	Headcount	%
Full-time	42	61%
Part-time	27	39%
Total	69	

Full-time >= 24 annual credit hours



SOURCE: ICHE Data Warehouse, annual SIS data submissions.