

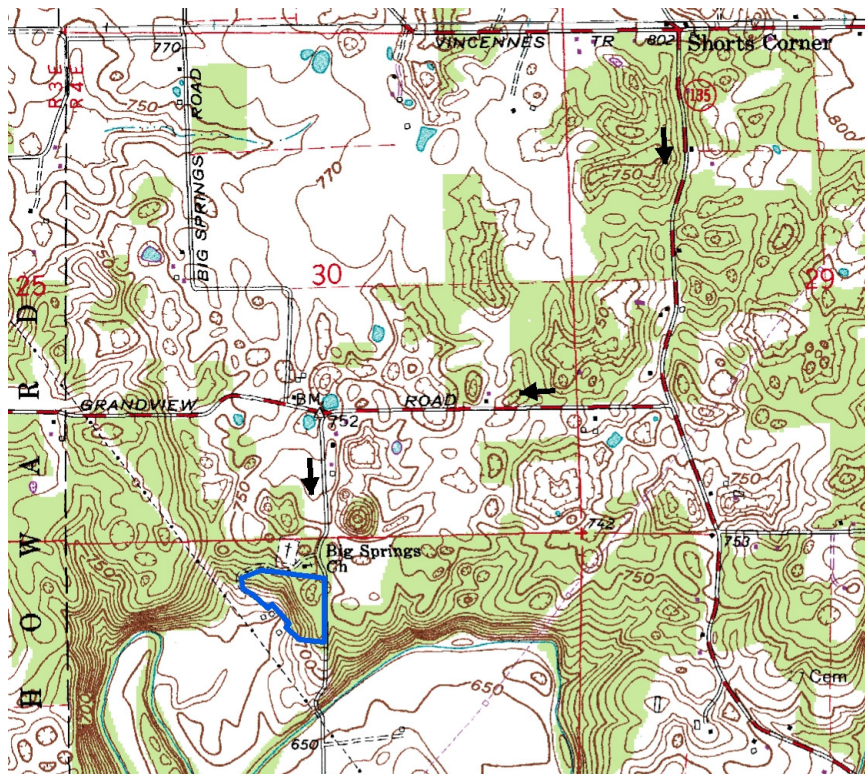
Big Spring Nature Preserve

County: Washington Size: 10 acres
Ownership: Nature Preserves - IDNR



Location and Access

Visiting should be avoided on Sundays. From Salem, take SR 135 South about 8 miles to Grandview Road (a T-junction). Take Grandview Rd. to Big Springs Rd. (about 0.8 mi.), which will be on the left. Go to Big Springs Church and park in the parking lot. There is a nature preserve and trail sign at the edge of the woods.



Description:

Big Spring is situated at the base of a steep spring alcove and represents an alluviated cave spring (one which has been previously covered by stream sediments). The rise pit is about 15 ft. in diameter and an estimated 6-8 ft. deep. The water originates from the sinkhole plain to the northeast. The minimum flow has been recorded to be 450 gallons per minute (or 650,000 gallons/day). The adjacent hillside contains a small, but high-quality old-growth forest. Large white, red, black and chinquapin oak dominate the forest. The understory is dominated by pawpaw, sugar maple, and spice bush.

Further Information: Division of Nature Preserves, 402 W. Washington St., Rm W267, Indianapolis, IN 46204, (317) 232-4052