

Bell-Croft Woods Nature Preserve

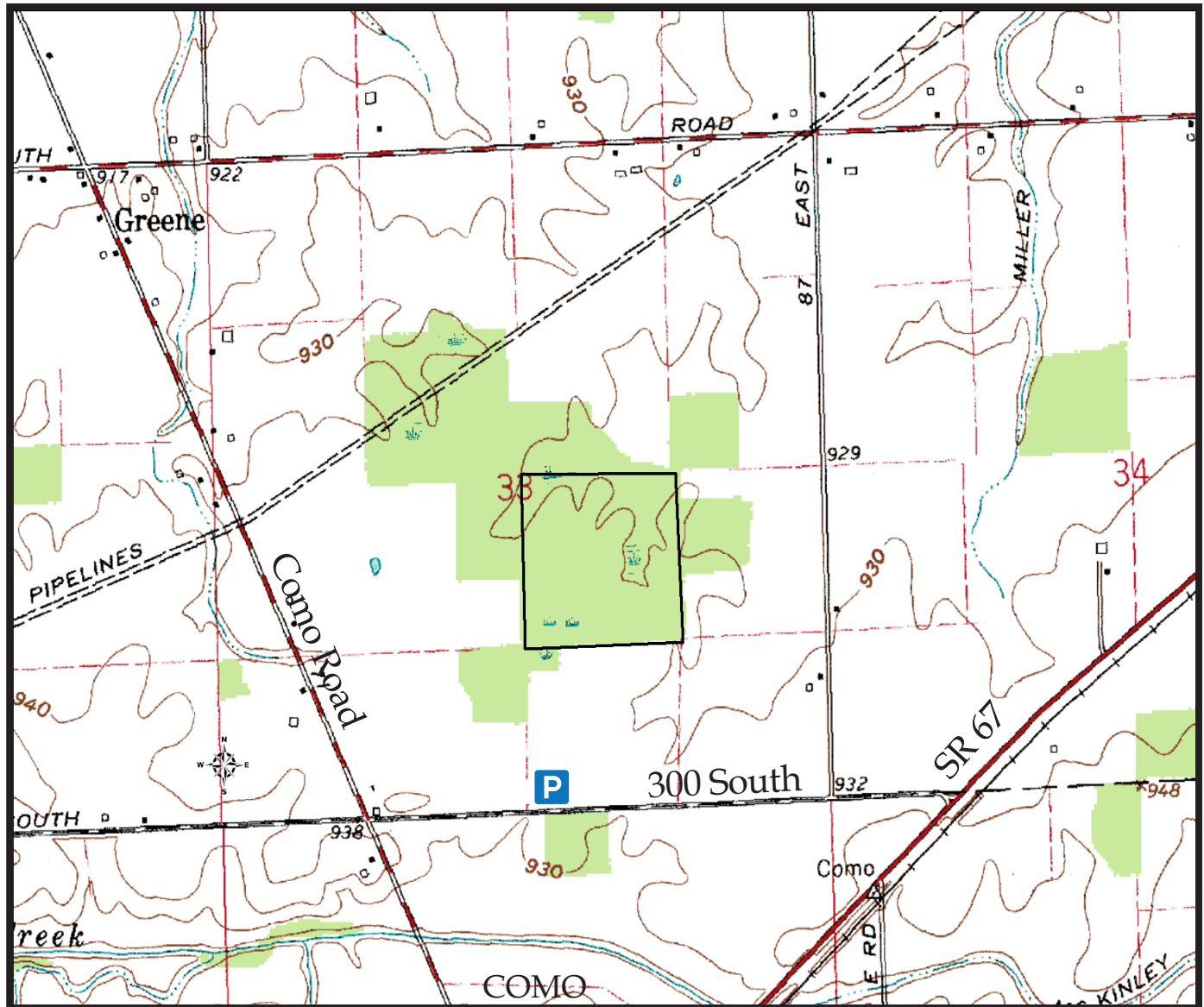
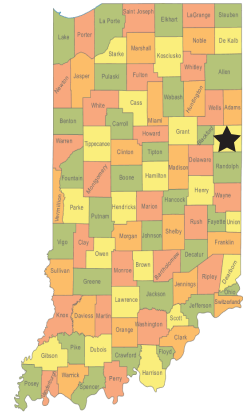
County: Jay

Size: 40 Acres

Ownership: Nature Preserves-IDNR

Location and Access: Parking Lot and Trail

The nature preserve is located about 1 mile due north of the community of Como, on State Road 67. It can be accessed from the parking lot located along 300S. An access lane through a mature fencerow leads to a loop trail.



Description:

Bell-Croft Woods is a mixed old-growth stand with numerous large trees of a variety of species including white oak, red oak, burr oak, pin oak, beech, sugar maple, shagbark hickory, red elm, black cherry, basswood, and cottonwood. This "flatwoods" natural community is a remnant of the large forest that once covered much of east-central Indiana. It has a fine display of spring wildflowers. A small buttonbush swamp provides a breeding site for frogs and salamanders.

Further Information:

DNP East Central Region Ecologist, Ken Brunswick: kbrunswick@dnr.in.gov