

Indiana Coastal Cooperative Weed Management Area ICCWMA

ICCWMA Coordinator: Maggie Byrne, The Nature Conservancy
219-981-9183
mbyrne@tnc.org



Why form a CWMA?

- They cross boundaries
- CWMA's allow partners to share and leverage limited resources
- CWMA's are highly visible
- Focuses attention
- Reduces the risk of control efforts
- Provides an early detection and rapid response network
- Helps secure funding
- Address everyone's goals

ICCWMA Members

- ▶ Formal partners so far:
 - Indiana Dept. of Natural Resources
 - Northern Indiana Public Service Company (NIPSCO)
 - Lake County Parks and Recreation Department
 - Indiana Dunes National Lakeshore
 - Save the Dunes
 - Shirley Heinze Land Trust
 - The Nature Conservancy
- ▶ Cooperating partners:
 - Indiana Department of Transportation
 - Porter County Parks

Common Goals

Priorities

- High biodiversity natural areas
- specifically sites with element occurrences

Project Based

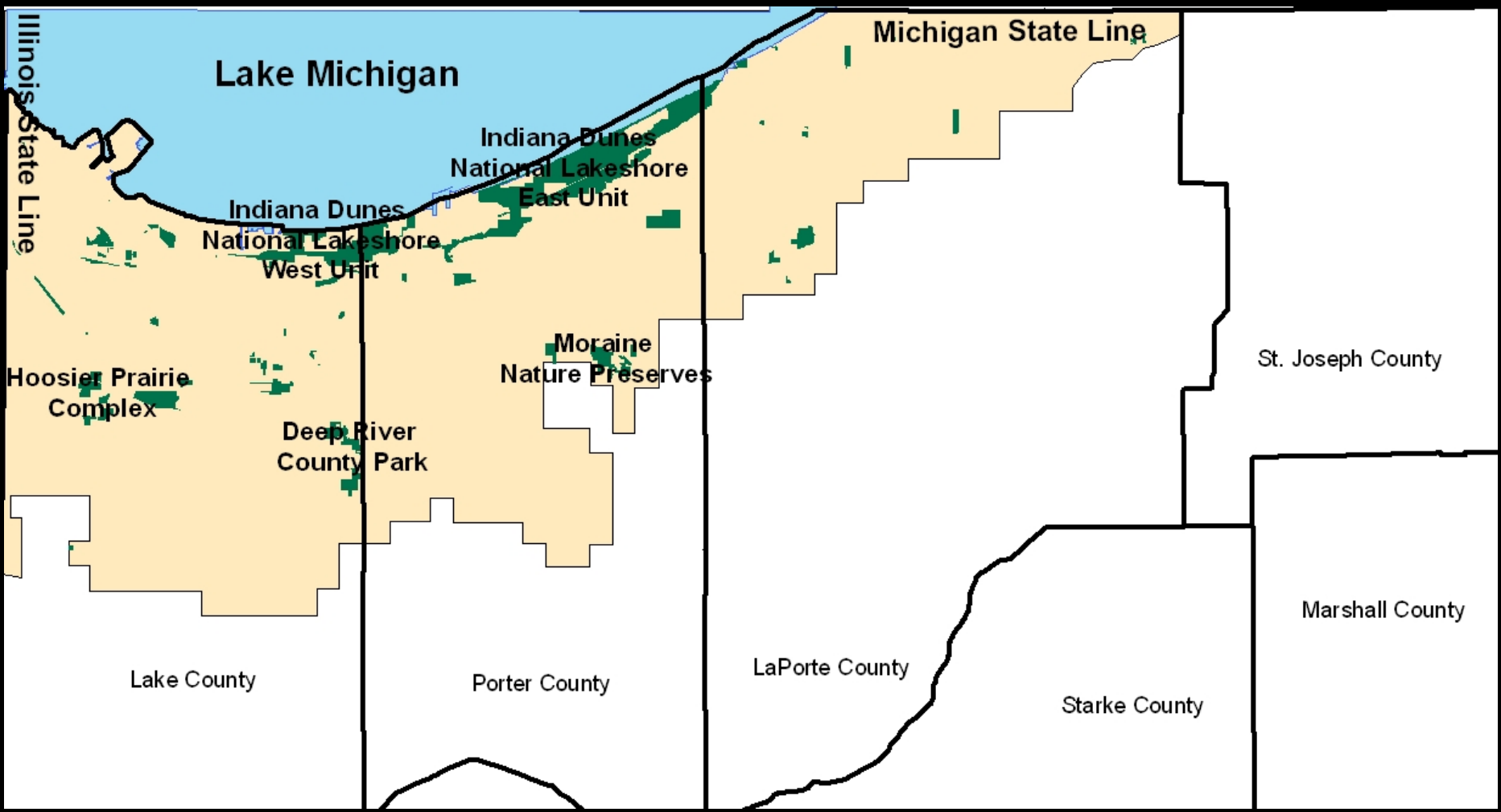
- must involve two or more partners
- Focused on and committed to on the ground weed control projects

Funding

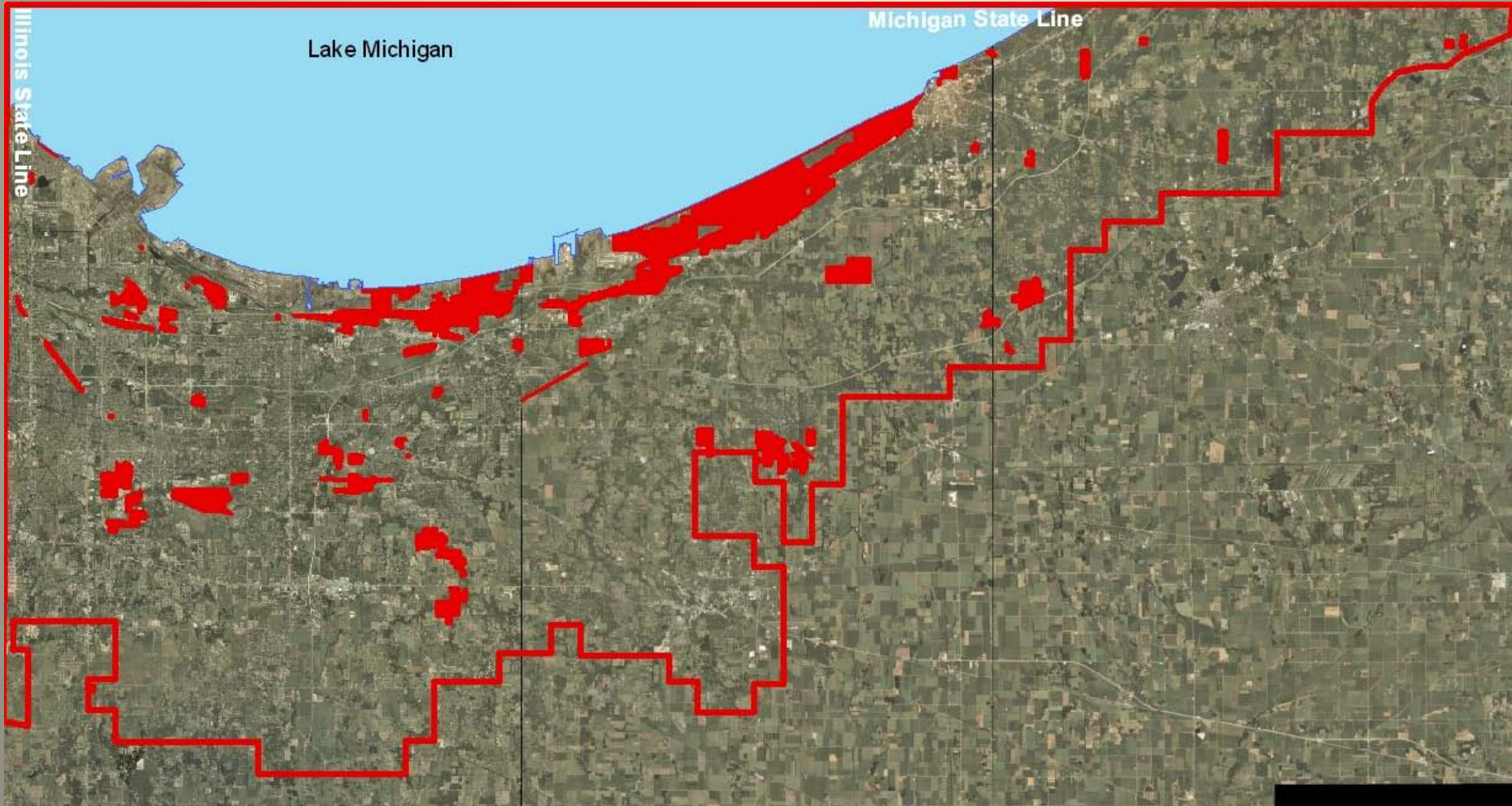
- Used to accomplish objectives above and beyond each individual organization's objectives



Indiana Coastal Cooperative Weed Management Area



Managed Areas with Element Occurrences in the Indiana Lake Michigan Coastal Region



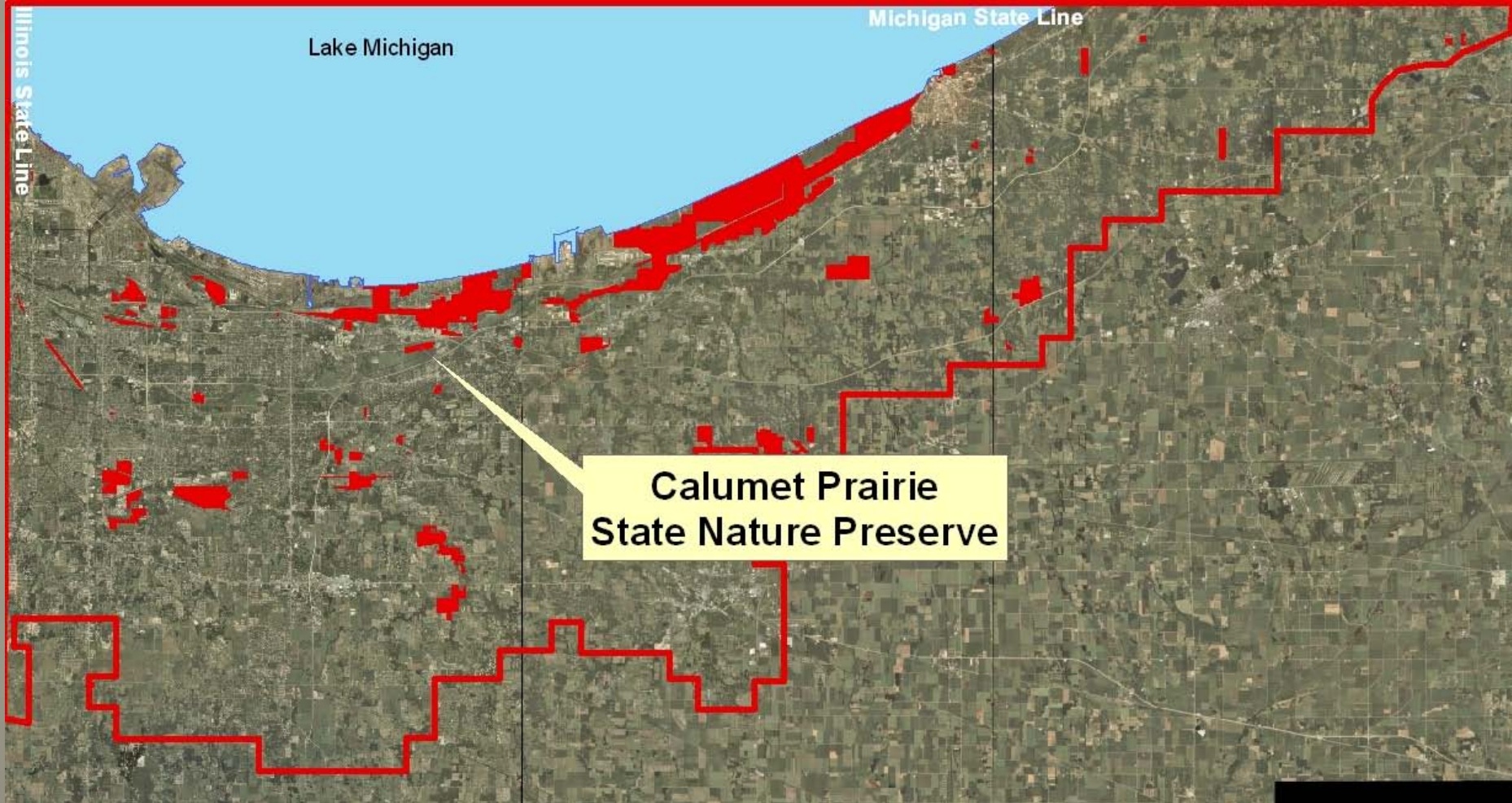
CWMA Funding coming soon (we hope)

- \$100,000 from GLRI through Forest Service to form CWMAs in Great Lakes Region
- No match required
- Non – competitive
- PROJECTS: On-the-ground invasives control projects
 - High-biodiversity sites
 - Involve two or more partners
 - Build on existing projects
 - Building relationships with non-traditional partners
 - Simple
 - Sustainable
 - Accomplish objectives above and beyond individual partners' goals

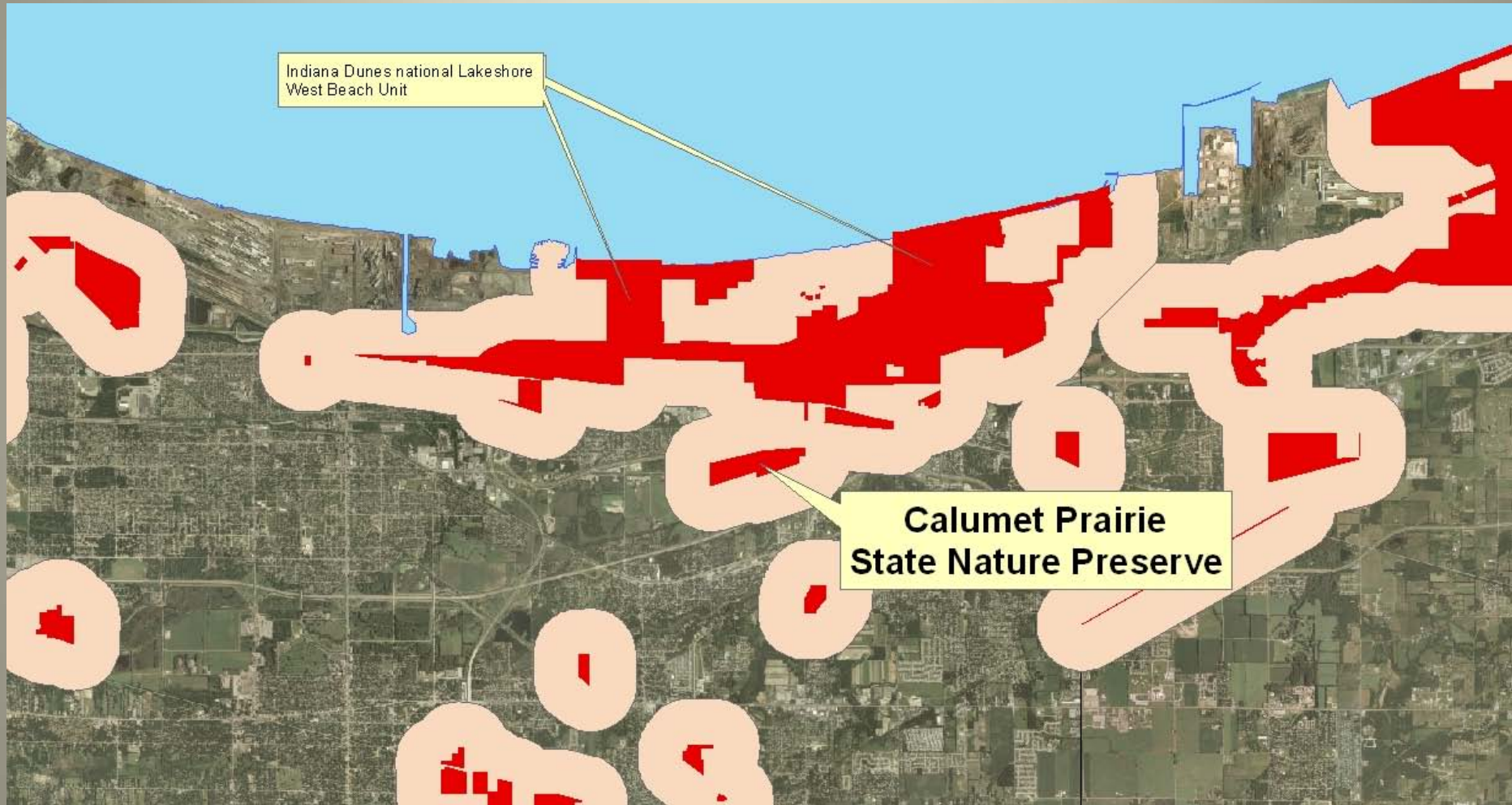
Deliverables

1. Draft organizational document and work plan for operation
2. Three educational and outreach activities
3. Produce a list of target non-native invasive species for control or eradication activities and an accurate inventory mapping of at least one of those species within the group's identified CWMA focus areas
4. Track infested acres and species.
5. Control non-native invasive species on 40-80 gross acres of public and private lands on at least two partners' properties within the ICCWMA.

Project Example #1: Calumet Prairie State Nature Preserve Landscape Scale Perspective.....



..... buffered area within a half-mile of National Lakeshore property

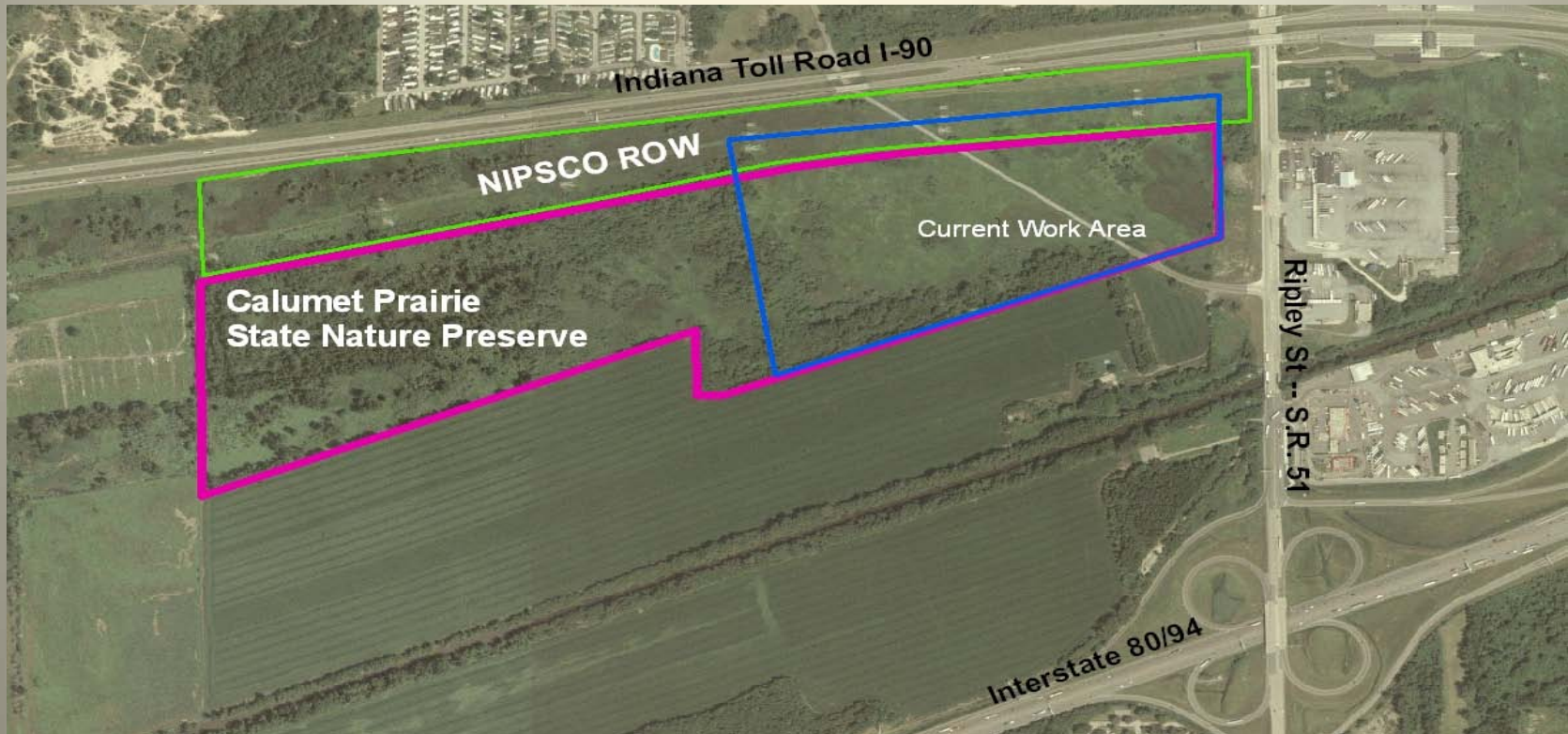


Calumet Prairie State Nature Preserve

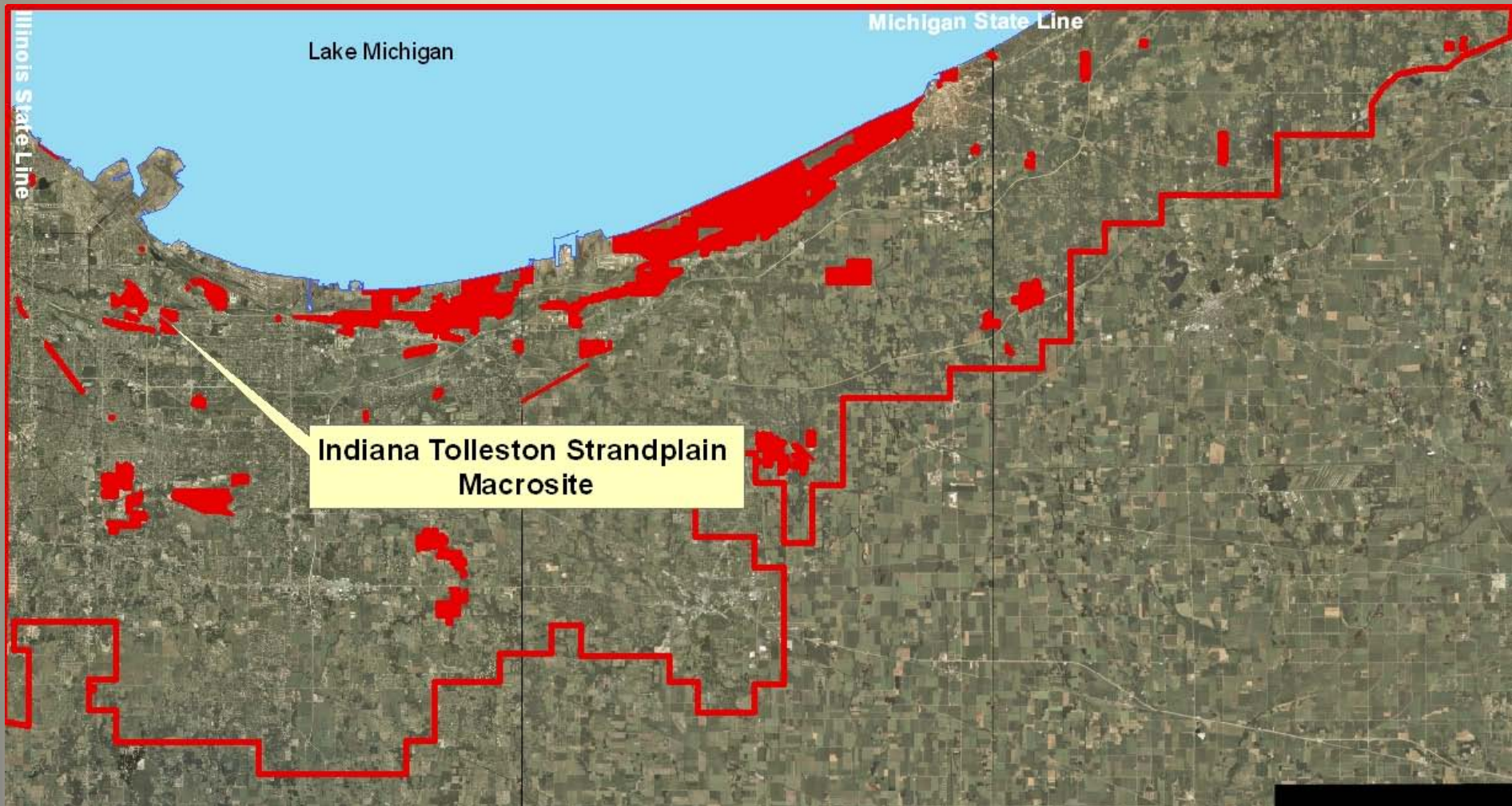
Partners: DNR / NIPSCO

Sustainable Project:

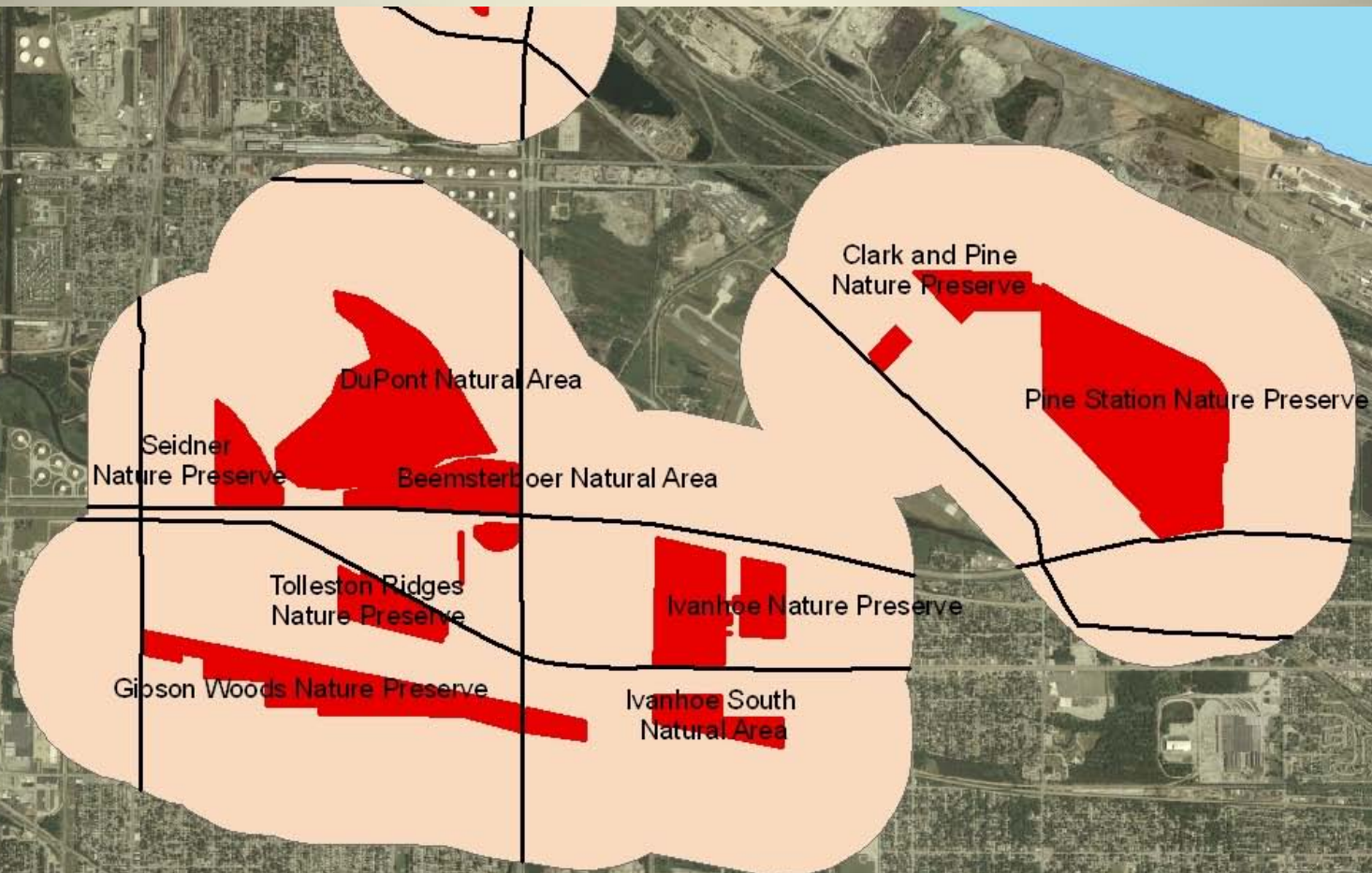
- Weed management / restoration work already in progress, and also planned for future
- Adjacent land manager (NIPSCO) already engaged and vested
- Future plans to form management agreement



Project Example #2: Indiana Tolleston Strandplain Macrosite Landscape Scale Perspective.....



Eleven high-biodiversity dune and swale sites, owned or managed by five different organizations, within half-mile buffer, will benefit.



Dune and Swale properties (ITS Macrosite)

Partners: INDOT / TNC / SHLT / STD / LCP / DNR

Sustainable Project:

- Intensive management / restoration work already in progress, and also planned for future
- Partners already engaged and (mostly) vested
- Future plans to form management agreement with INDOT



Long term plans

- Finalize projects for GLRI funding
- Complete 3-5 year plan
- Continue engaging land owners / land managers
- Develop and implement early detection / rapid response program, working with Chicago Region CWMA
- Seek additional funding to treat invasives
- Control lots of acres of invasives
- TNC will either pass the Coordinator responsibilities to another partner organization,
- Or ICCWMA will achieve its own 501©3 status, and hire its own Coordinator
- World domination