

(continued on back panel)

Parke County is similar to much of southern Indiana, with its rich rolling farmland, mineral reserves, and spirit is the same as that of the pioneers more than 150 years ago. Equipment has been modernized, but the technique still operate in the hard maple groves in Parke County. Today, several active sugar camps operate in the area. They boiled down the water to syrup or granulated sugar for use as a sweetener during the five Americans in collecting sugar water from the trees translated that as Sugar Creek and followed the Na-meaning "Stream of Many Sugar Trees." Early settlers in Parke County, the name "Pun-go-of Parke County was complete."

The Native Americans gave the name "Pun-go-of Parke County was complete." Treaty of St. Marys in 1818. By 1840, the settlement after signing the "10 O'Clock Treaty" in 1809 and the nee and Miami! The Native Americans lost the area five American tribes, primarily the Delaware, Shaw-Indiana, Parke County was inhabited by several Na-organized on Jan. 9, 1821. As with most of southern trict Court in Indiana, Parke County was officially Creek in the rolling farmland of Parke County. Named Cecil M. Harden Lake is located on Big Raccoon

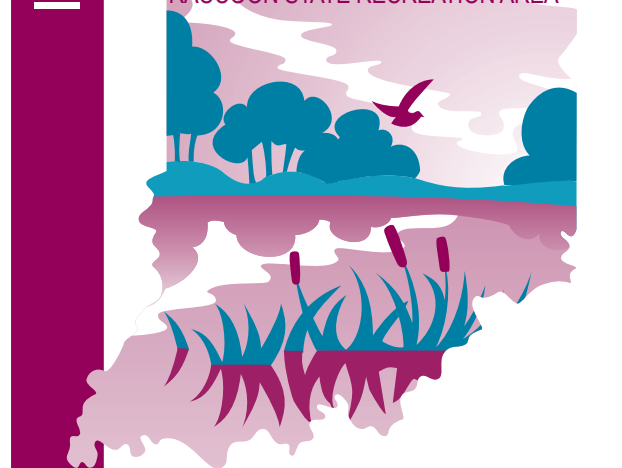
AREA HISTORY AND FEATURES

Cecil M. Harden Lake, formerly Mansfield Lake, was designed and built by the Louisville District of the U.S. Army Corps of Engineers. The lake serves as a unit of effect reduction in flood stages downstream from the dam, primarily in the Big Raccoon Creek and Lower Wabash River watersheds. Existence of the lake creates the potential for water-related recreation and provides for the enhancement of fish and wildlife.

The lake was authorized by the Flood Control Act approved June 28, 1938. Construction began in October 1956. The project became operational in July 1960. The lake was renamed from Mansfield Lake by a bill signed into law on Dec. 14, 1974, by President Gerald R. Ford, in recognition of Mrs. Cecil Murray Harden for her role in obtaining funds for the project. She has long been recognized as one of the most active members of the community, serving in positions on the local, state and national levels. She was the U.S. Congressional Representative for the area for five terms, beginning in 1949.

PURPOSE AND PROJECT HISTORY

Cecil M. Harden Lake, formerly Mansfield Lake, was designed and built by the Louisville District of the U.S. Army Corps of Engineers. The lake serves as a unit of effect reduction in flood stages downstream from the dam, primarily in the Big Raccoon Creek and Lower Wabash River watersheds. Existence of the lake creates the potential for water-related recreation and provides for the enhancement of fish and wildlife.



Located on U.S. 36 in Parke and Putnam counties in west central Indiana, Cecil M. Harden Lake is 50 miles west of Indianapolis and 35 miles northeast of Terre Haute. It was constructed by the U.S. Army Corps of Engineers and opened in 1960. The property is operated and maintained by the Indiana Department of Natural Resources, under a lease arrangement with the U.S. Army Corps of Engineers. The main functions of Cecil M. Harden Lake are to control flooding and to provide recreation and resource management. The property is composed of 2,005 acres of land with a 2,060-acre lake.

Surrounded by numerous species of trees, Cecil M. Harden Lake is a naturalist's delight. Wildflowers, berries, nuts and mushrooms grace the wooded areas of this property. Minutes away lies the site of the Parke County Covered Bridge Festival, which draws thousands of visitors every October.

DNR Indiana Department of Natural Resources

INDIANA

(For a complete list of rules and regulations, inquire at property office.)

- Use of metal detectors is prohibited.
- Feeding of wildlife is prohibited.
- Report lost or found articles to the property office.
- This water is tested regularly for purity.
- Hydrants or fountains provided for that purpose.
- Drinking water should be taken only from pumps, beverage at a swimming beach.
- No person shall possess or consume an alcoholic only in designated areas (30 mph maximum).
- Motorists shall observe posted speed limits and park in receptacles provided for that purpose.
- Comply with the Carry In/Carry Out trash policy in all day-use areas. Overnight guests must put waste in receptacles provided for that purpose.
- Fires shall be built only in designated places.
- Youth groups must be under adult supervision.
- Camping is permitted only in the campground. DNR is prohibited.
- Vending or advertising without permission of the more than 6 feet long.
- A person who possesses a pet must attend it at all times and keep the animal caged or on a leash no by the person in the field for a specified date.
- Obtained from a hunter sign-in station and possessed the terms of a one-day hunting permit and record card or locked within a vehicle except in accordance with must be unloaded or un-nocked and stored in a case Any firearm, BB gun, air gun, CO₂ gun, bow and arrow those purposes. No person shall leave watercraft unattended in a courtesy dock.
- No person shall launch, dock, or moor a watercraft or other floating device, except for approved permit-tournament on a reservoir property administered by the Division of State Parks and Reservoirs, except under a license.
- No person shall conduct or participate in a fishing

RULES AND REGULATIONS

Visitors shall observe the following rules, which are designed to fulfill the purposes for which the state operates reservoir properties, namely, to manage these areas for the enhancement of wildlife and for the public's use and enjoyment.

THIS IS YOUR LAKE

(continued from front left panel)

coal, natural gas and valuable forests of oak, walnut, maple and hickory. Residents also treasure the unique link to the past as the "Covered Bridge Capital of America." A total of 31 covered bridges dot the countryside of Parke County, more than any other county in the United States. Because of their regional popularity, two master covered-bridge builders, J.J. Daniels and J.A. Brittin, lived in Rockville, the county seat. The remaining 31 bridges were built between 1865 and 1921. The oldest bridges still carry traffic.

CENTRAL RESERVATION SYSTEMS

Reservations for all types of camping, family cabins, and shelters at state parks, reservoirs and forests can be made online or by calling toll-free.

camp.IN.gov
1-866-6campIN
(1-866-622-6746)



Reservations for the Indiana State Park Inns and Inn-operated cabins can be made online or by calling toll-free.

Indianalns.com
1-877-lodges1
(1-877-563-4371)

FOR MORE INFORMATION



Write: Cecil M. Harden Lake
Raccoon State Recreation Area
1588 S. Raccoon Parkway
Rockville, IN 47872

Call: (765) 344-1412 or (765) 344-1884
Fax: (765) 344-1415



Indiana Department of Natural Resources
www.dnr.IN.gov

SPECIAL NOTE

Receipts from admission and service charges are used to help defray the operation and maintenance costs of the lake. List of fees available in the lake office.

The programs, services, facilities, and activities of the Indiana Department of Natural Resources are available to everyone. DNR prohibits discrimination on the basis of race, color, national origin, age, sex, or disability. If you believe that you have been discriminated against in any program, activity, or facility as described above, or if you desire further information please write to: Department of Natural Resources, Executive Office, 402 W. Washington St., W256, Indianapolis, IN 46204, (317) 232-4020.

10/8/08

Please let wild animals remain wild. Feeding deer is prohibited. Feeding of wild animals can result in harm to both animals and people. Animals who depend on handouts become a nuisance to visitors and a danger to themselves. Please lock all food and coolers inside cars or campers. Roll up car windows tightly.



Please carry out all trash you produce in order to keep your property clean and beautiful for others to enjoy.

PLEASE STAY ON MARKED TRAILS.

*Trails 1-5 closed during high water.

1. MODERATE (1.5 miles)—Starts at the main boat ramp and goes around the south shore of the peninsula to the Payne shelter, past the 1800s Payne Cemetery, Miami Vista, She-Qui-Oh Vista ("Lean Raccoon") and three scenic overlooks of the lake. The trail returns hikers to near the campground store.
2. MODERATE (1.3 miles)—Starts just north of the campground store. The trail passes the Tomahawk Ravine and the Arrowhead Vista. Hikers will see areas of second growth, mature forest and steep ravines before reaching the swimming beach.
3. MODERATE (1.1 miles)—Starts on the northern edge of Raccoon Run campground. Trees include maple, oak, poplar and sycamore. Hikers will pass several bank-fishing areas before the trail concludes at the fish-cleaning station.
4. RUGGED (2.1 miles)—Starts near the west edge of the Whittail campground. Hikers will see deep sandstone cliffs and several open views of the lake while on the rugged terrain.
5. MODERATE (1.4 miles)—Starts near the Bluebird shelter, leads through successional vegetation, second-growth timber and a variety of artificial wildlife homes. Trail loops and returns to shelter.
6. ARCHERY TRAIL—Trail begins at the gatehouse parking lot and leads through the Twin Ponds area. Archery enthusiasts can shoot at stationary targets and from elevated stands along a five-station, real-condition, simulated practice trail.

DESCRIPTION OF TRAILS

ACTIVITIES AND FACILITIES

BEACH—Swimming, modern bathhouse and concessions available Memorial Day through Labor Day.

BOAT RAMPS—Available at five locations, boat launching ramps are marked on the map. Raccoon ramp open year-round; all other ramps are seasonal. Boat ramps subject to closure during high water.

BOAT RENTAL—Fishing boats, pontoon boats and ski boats are available by the hour or day. Inquire at Boat Rental Office for rates and reservations.

CAMPING—Campsites available are electric, non-electric and primitive. Occupancy limited to 14 consecutive nights. Reservations available through the Central Reservation System.

CONCESSION & CAMPGROUND GROCERY—Open summer months. Wood, ice, picnic supplies and groceries available.

FISHING—Largemouth, smallmouth and striped bass, bluegill, catfish, crappie, walleye and white bass. Trout fishing available in tailwater area in season. State license required and available at lake office.

HIKING—Easy to rugged marked trails are available for hiking all year.

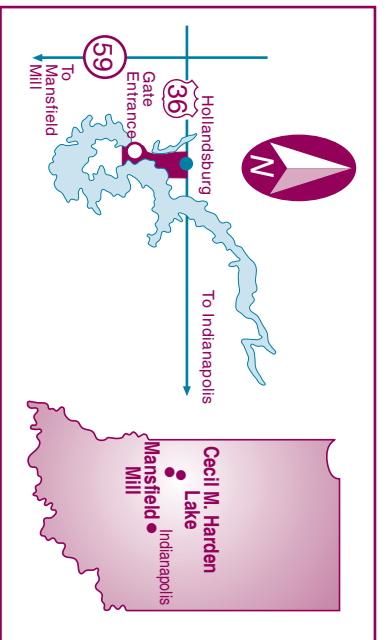
HISTORIC MASFIELD ROLLER MILL—Located six miles south of U.S. 36 off S.R. 59 and managed by Raccoon SRA. Staffed seasonally May-October. This 3 1/2 story 1880s flour mill contains most of the original equipment and stands as an example of the beginnings of industrial automation in Indiana.

HUNTING—All hunters are required by law to sign in and return a hunting permit card to a hunter sign-in station. Although limited by area, there are some hunting opportunities for waterfowl and upland game.

INTERPRETIVE NATURALIST SERVICE—Explore the world of natural resources while enjoying interpretive and recreational programs. Program schedules are available at InterpretiveServices.IN.gov or by calling (765) 344-1412.

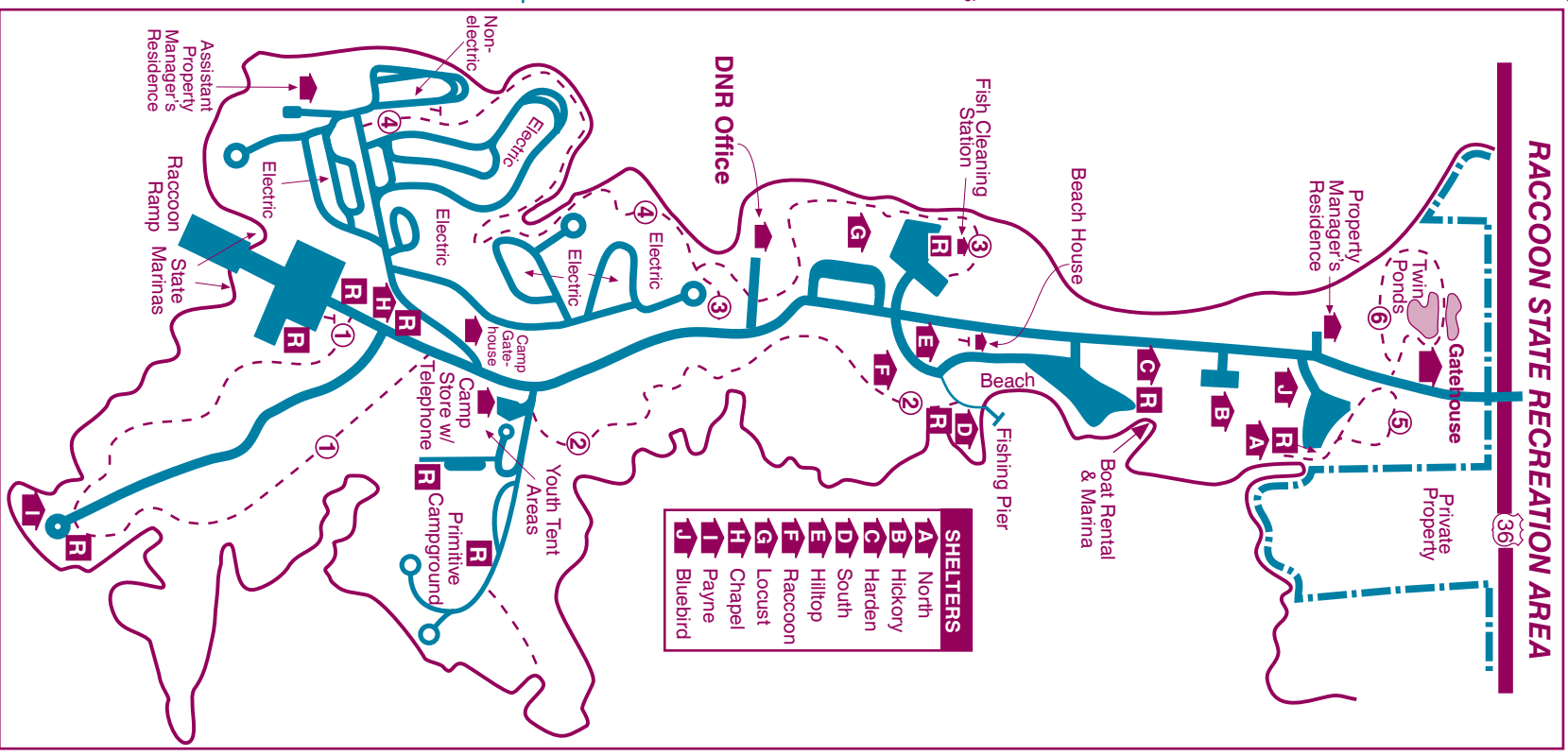
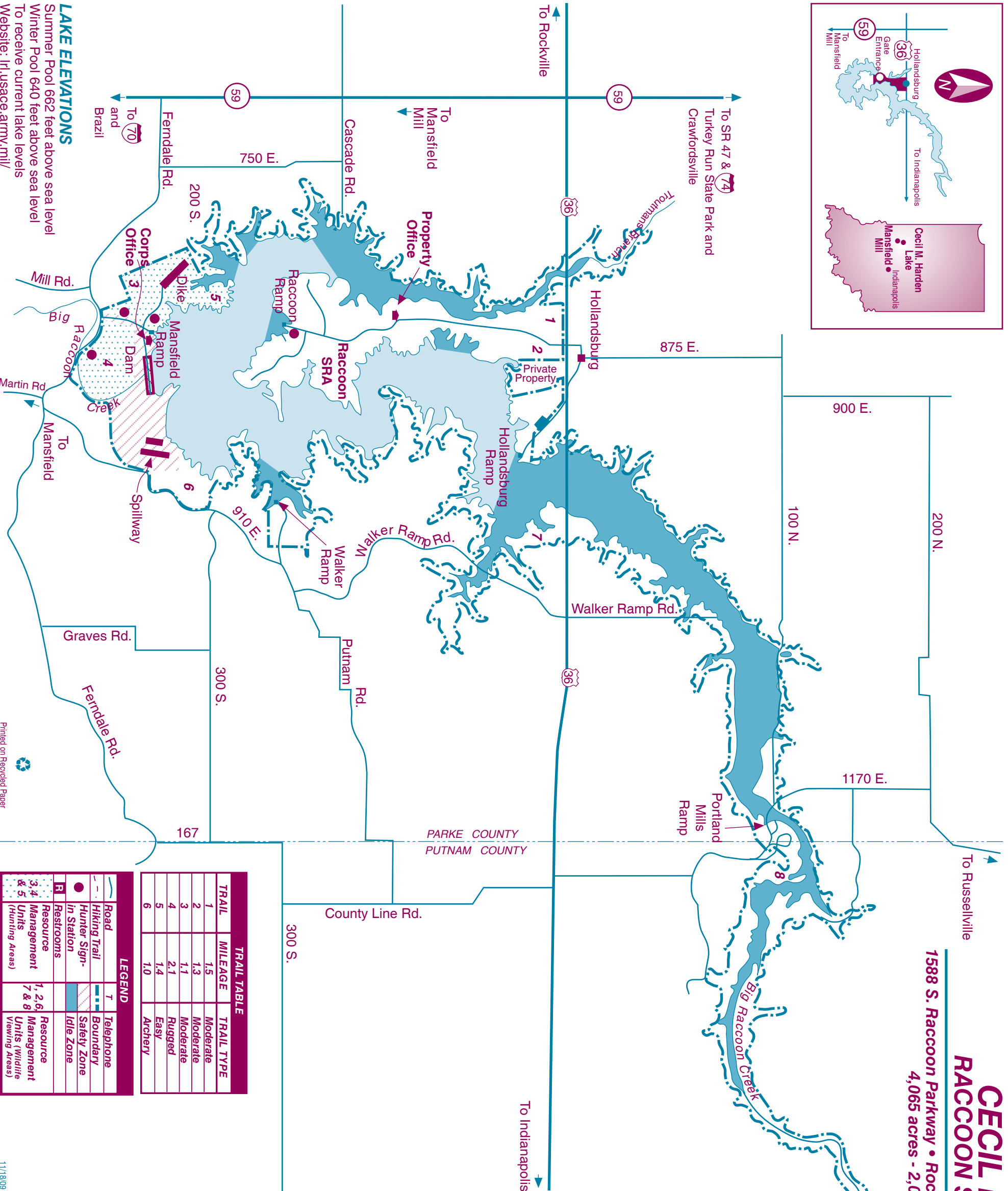
PICNIC AREAS/SHELTERS—Picnicking is available in a number of areas, containing tables, grills, toilet facilities and playfield. Accessible picnic sites available. Reservations for shelters available through the Central Reservation System.

YOUTH TENT CAMPING—Offered for organized youth groups under adult supervision in designated areas. Advance reservations required. Reservations available through the Central Reservation System.



CECIL M. HARDEN LAKE RACCOON STATE RECREATION AREA

1588 S. Raccoon Parkway • Rockville, IN 47872 • (765)344-1412 • FAX (765) 344-1415
4,065 acres - 2,060-acre lake Established 1960



- SHELTERS**
- A North
 - B Hickory
 - C Harden
 - D South
 - E Hilltop
 - F Raccoon
 - G Locust
 - H Chapel
 - I Payne
 - J Bluebird

TRAIL	MILEAGE	TRAIL TYPE
1	1.5	Moderate
2	1.3	Moderate
3	1.1	Moderate
4	2.1	Rugged
5	1.4	Easy
6	1.0	Archery

LEGEND	
	Road
	Hiking Trail
	Hunter Sign-In Station
	Restrooms
	Resource Management Units (Hunting Areas)
	Telephone
	Boundary
	Safety Zone
	Idle Zone
	Resource Management Units (Wildlife Viewing Areas)

LAKE ELEVATIONS
Summer Pool 662 feet above sea level
Winter Pool 640 feet above sea level
To receive current lake levels
Website: <http://usace.army.mil/>

Printed on Recycled Paper

11/18/09