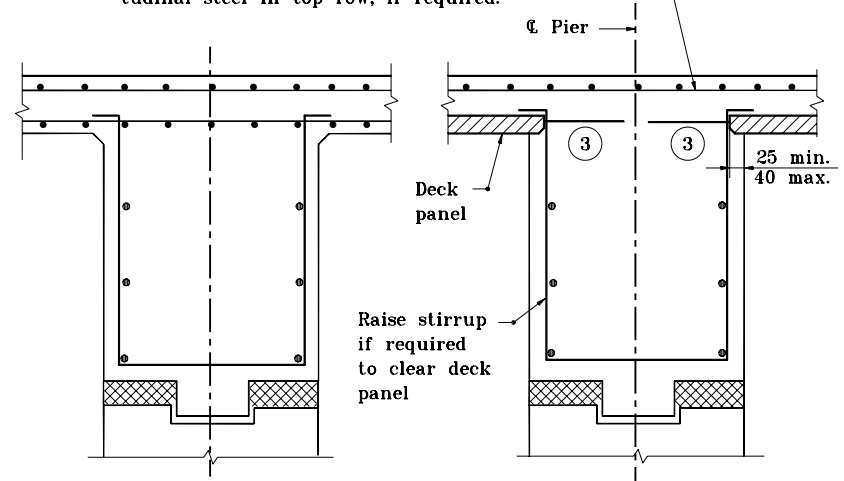


SKEWED PANELS AT PIERS AND END BENTS

Verify that longitudinal top steel will adequately resist negative support moment with longitudinal bottom steel omitted. Supply additional longitudinal steel in top row, if required.



AS DETAILED

REVISED FOR DECK PANELS

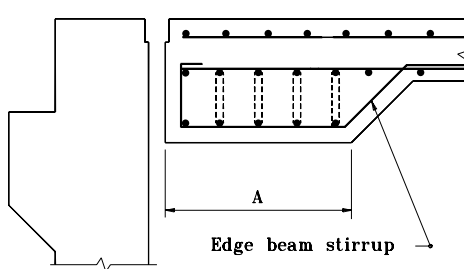
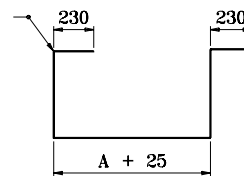
SECTION E-E

INTERIOR BEAM DETAIL

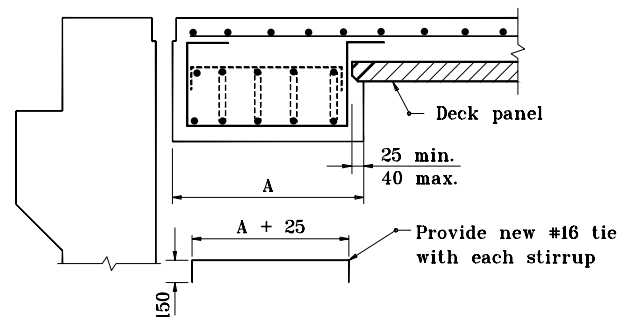
NOTES :

1. See Standard 707-BPDP-02 for General Notes.
 2. Details shown in Sections D-D & E-E indicate when precast deck panels are used. These details may be altered, when necessary to conform to original plan details.
- ③ Extend strands 300 mm on this edge.

Revised edge beam stirrup bending diagram. Maintain planned stirrup spacing



AS DETAILED



REVISED FOR DECK PANELS

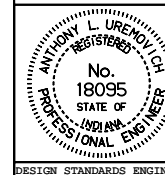
SECTION D-D

TRANSVERSE EDGE BEAM DETAILS

All dimensions are in mm unless otherwise specified.
INDIANA DEPARTMENT OF TRANSPORTATION

**SKEWED PANELS
AT PIERS AND END BENTS**
MAY 2000

STANDARD DRAWING NO. 707-BPDP-05



/s/ Anthony L. Uremovich 5-01-00
DESIGN STANDARDS ENGINEER DATE

/s/ Firooz Zandi 5-01-00
CHIEF HIGHWAY ENGINEER DATE

DESIGN STANDARDS ENGINEER