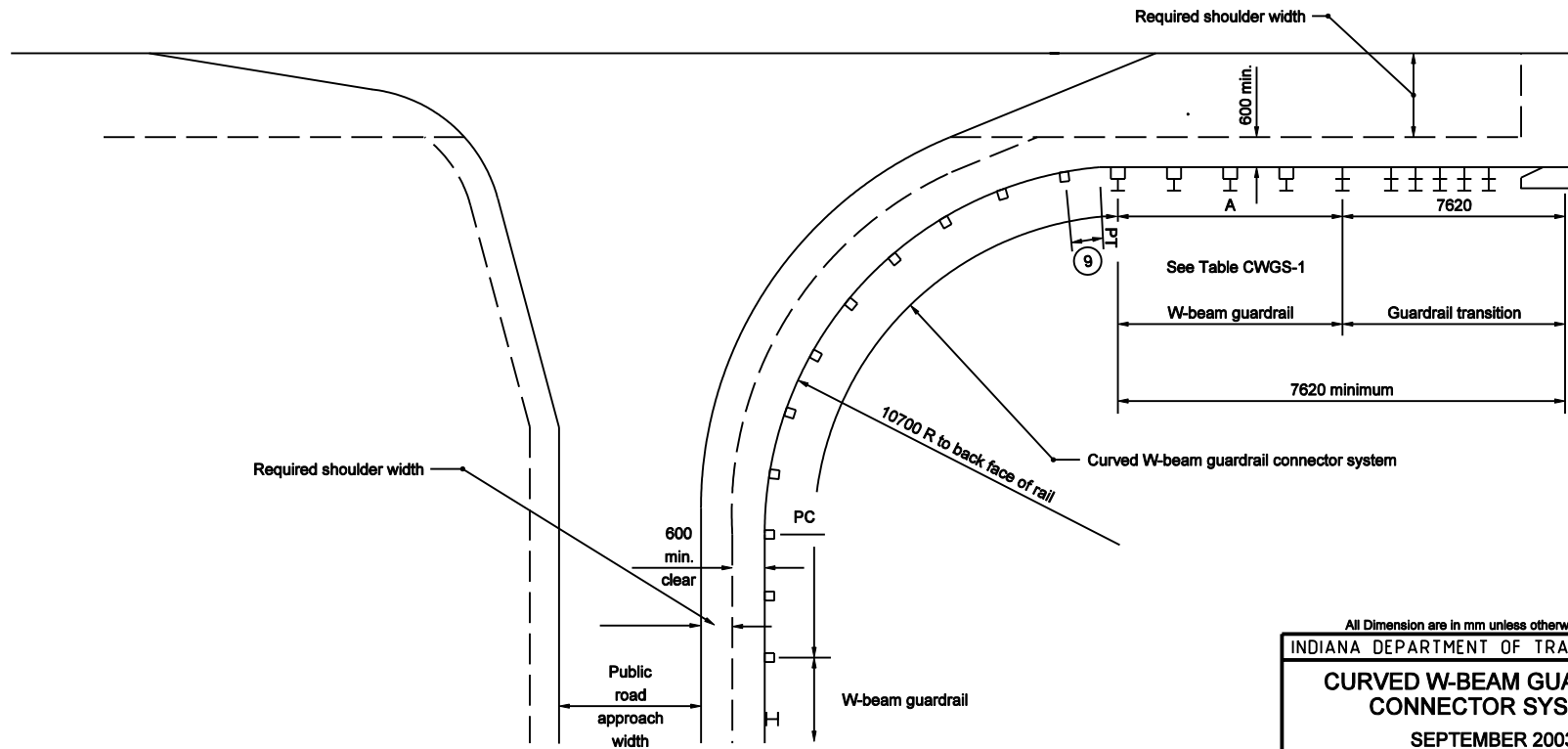


TABLE CWGS-1	
A	GUARDRAIL TRANSITION
< 7620	Type WGB
≥ 7620	Type TGB

GENERAL NOTES

1. See Standard Drawing 601-CWGS-03 for General Notes.



**PUBLIC ROAD APPROACH INSTALLATION
AT BRIDGE END**

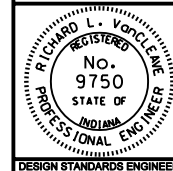
All Dimension are in mm unless otherwise specified

INDIANA DEPARTMENT OF TRANSPORTATION

**CURVED W-BEAM GUARDRAIL
CONNECTOR SYSTEM**

SEPTEMBER 2003

STANDARD DRAWING NO. 601-CWGS-01



/s/ Richard L. VanCleave 9-02-03
DESIGN STANDARDS ENGINEER DATE

/s/ Richard K. Smutzer 9-02-03
CHIEF HIGHWAY ENGINEER DATE

DESIGN STANDARDS ENGINEER