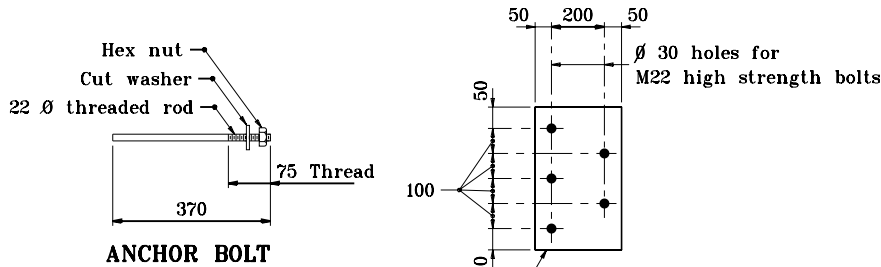


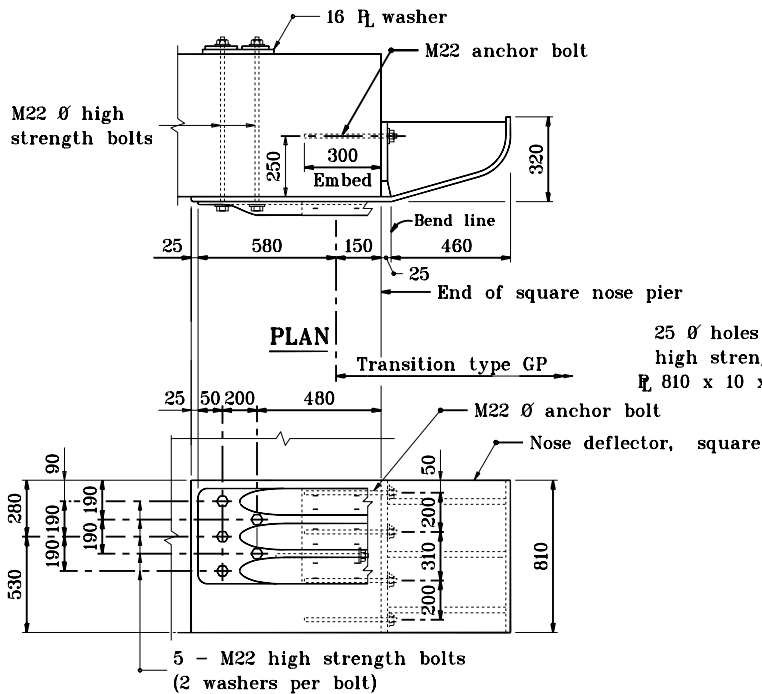
GENERAL NOTES

1. This sheet shall be used when guardrail transition type GP is specified to connect W-beam guardrail to a pier or frame bent collision wall.
2. The details on this sheet are for the assembly and installation of the deflector components for connecting guardrail transition type GP to a pier or frame bent collision wall.
3. The anchor bolt shall be anchored with a chemical anchor system shown on the Department's List of Approved Chemical Anchor Systems.



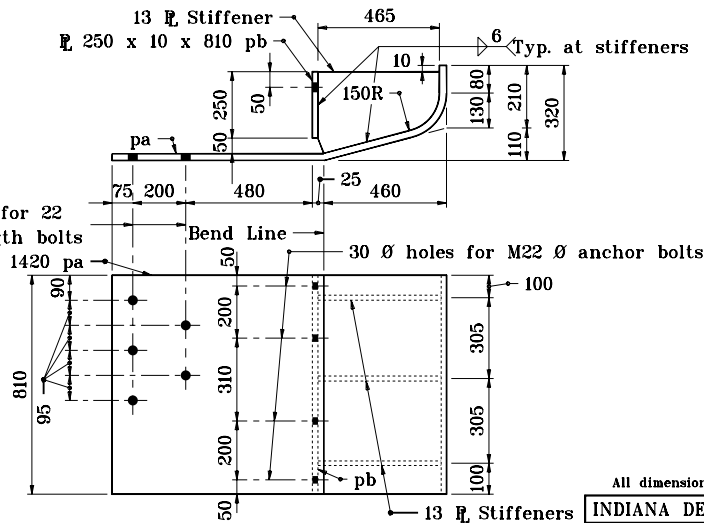
ANCHOR BOLT

PLATE WASHER



ELEVATION

ATTACHMENT AT SQUARE NOSE PIER



DETAIL OF NOSE DEFLECTOR - SQUARE

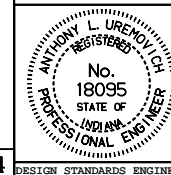
All dimensions are in mm unless otherwise specified.

INDIANA DEPARTMENT OF TRANSPORTATION

**TRANSITION AT PIER
TYPE GP**

SEPTEMBER 1998

STANDARD DRAWING NO. **601-TPGP-01**



/s/ Anthony L. Uremovich 9-01-98
DESIGN STANDARDS ENGINEER DATE

/s/ Donald W. Lucas 9-01-98
CHIEF HIGHWAY ENGINEER DATE

Source Sheet: **T-4**