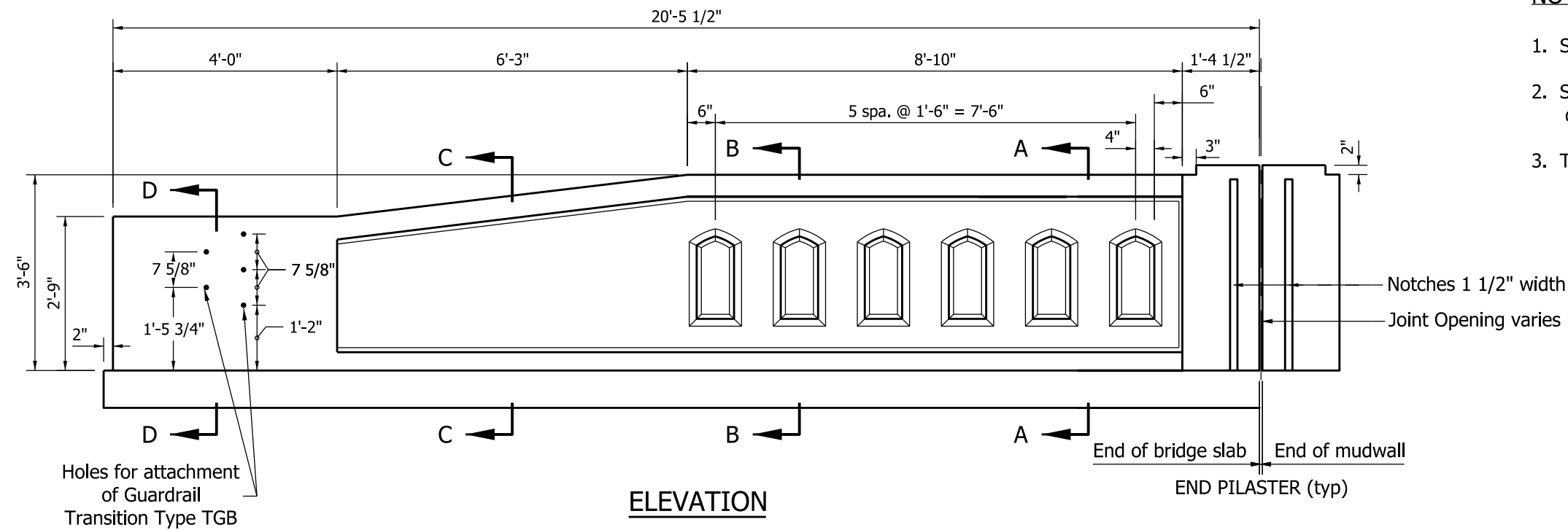
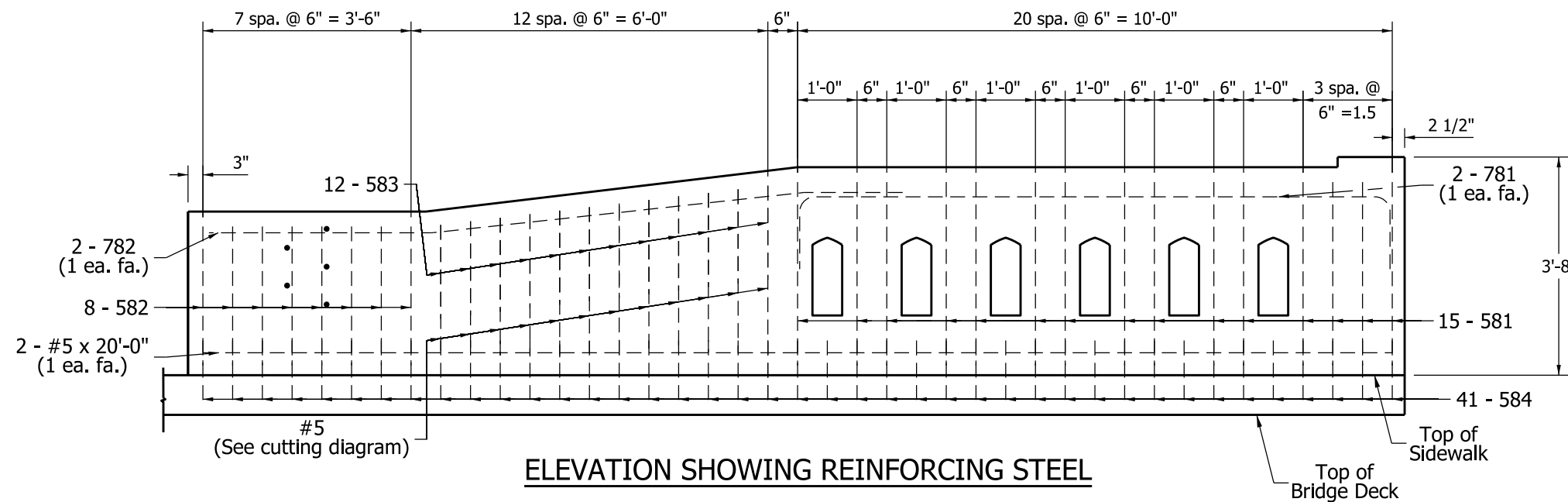


NOTES:

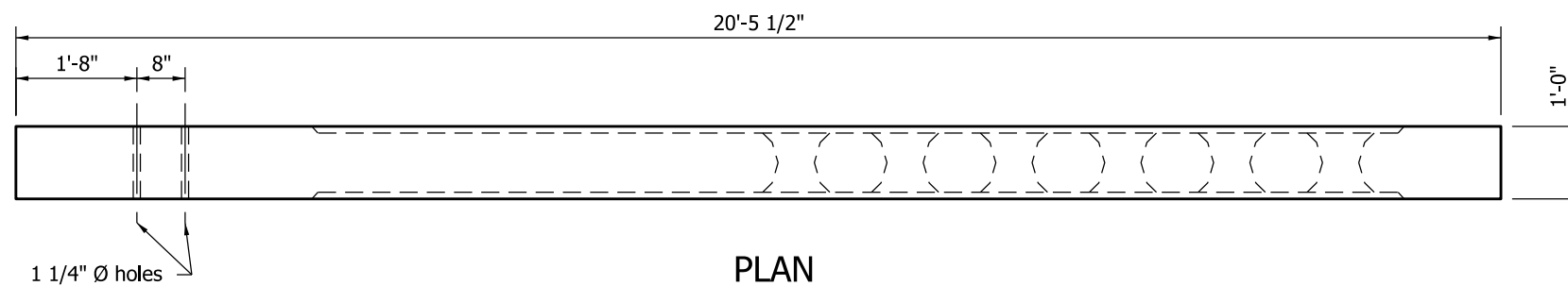
1. See Standard Drawing E 706-TTBP-09 for general notes.
2. See Standard Drawing E 706-TTXX-02 for sections reinforcing-bar diagrams, and cutting diagrams.
3. The quantities listed in the Bill of Materials are for one transition.



ELEVATION



ELEVATION SHOWING REINFORCING STEEL



PLAN

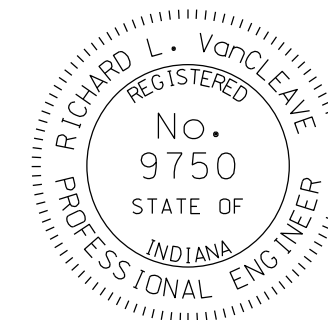
BILL OF MATERIALS, TX EPOXY-COATED REINFORCING STEEL			
Mark / Size	No. of Bars	Total Length	Weight
781 x 12'-4"	2	24'-8"	
782 x 11'-9"	2	23'-6"	
Total #7		48'-4"	99 lb
581 x 8'-6"	15	127'-6"	
582 x 7'-0"	8	56'-0"	
583 x 3'-8"	12	44'-0"	
584 x 3'-0"	41	123'-0"	
#5 x 20'-0"	2	40'-0"	
#5 x 5'-0"	6	30'-0"	
Total #5		420'-6"	439 lb
Total Epoxy-Coated Reinforcing Steel			538 lb
MISCELLANEOUS			
Concrete, Class C			2.0 cys
Surface Seal			149 sft

INDIANA DEPARTMENT OF TRANSPORTATION

CONCRETE BRIDGE RAILING
TRANSITION, TTX

SEPTEMBER 2011

STANDARD DRAWING NO. E 706-TTXX-01



DESIGN STANDARDS ENGINEER

/s/ Richard L. VanCleave 09/01/11
DESIGN STANDARDS ENGINEER DATE

/s/ Mark A. Miller 09/01/11
CHIEF HIGHWAY ENGINEER DATE