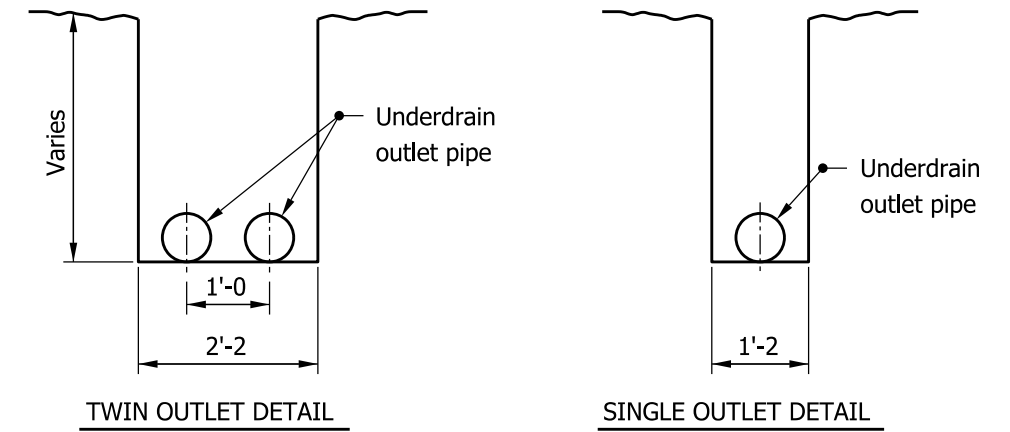
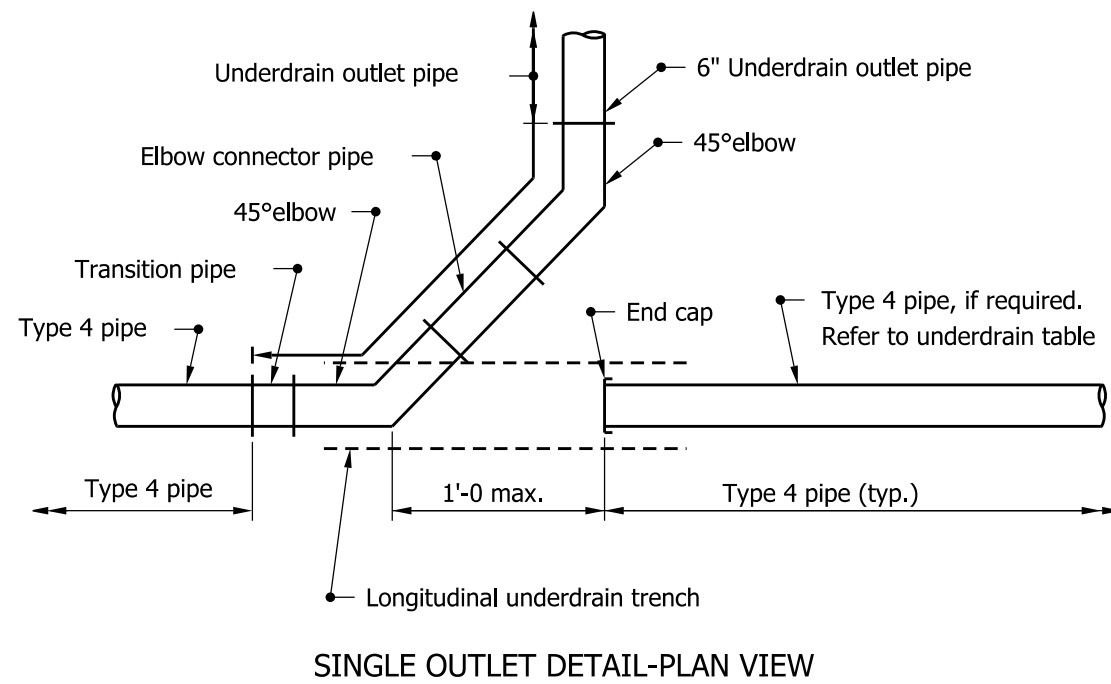


**NOTE:**

1. See Standard Drawing E 718-UNDR-07 for General Notes.



**OUTLET TRENCH DETAILS**

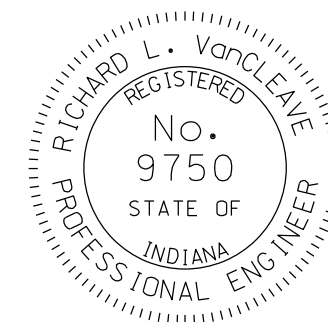


INDIANA DEPARTMENT OF TRANSPORTATION

**UNDERDRAIN DETAILS**

SEPTEMBER 2009

STANDARD DRAWING NO. E 718-UNDR-01



DESIGN STANDARDS ENGINEER

*/s/ Richard L. VanCleave* 09/01/09  
DESIGN STANDARDS ENGINEER DATE

*/s/ Mark A. Miller* 09/01/09  
CHIEF HIGHWAY ENGINEER DATE