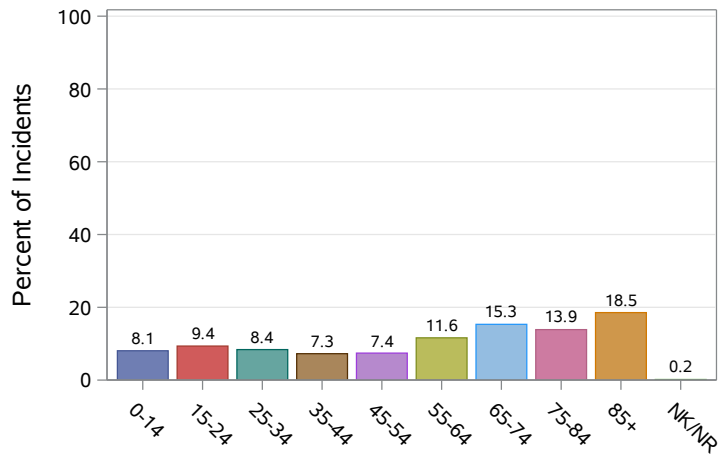


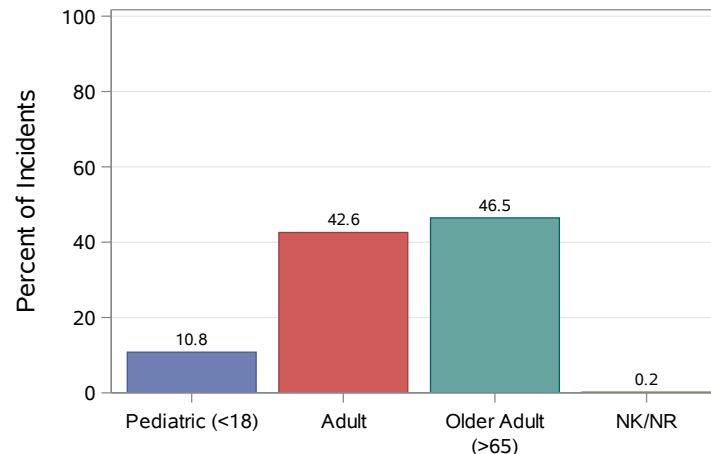
## District 2: Quarter 4 Indiana Trauma Registry Report

Statewide Incidents: 10031 Hospitals Reporting: 110 District 2 Incidents: 620 Hospitals Reporting: 7

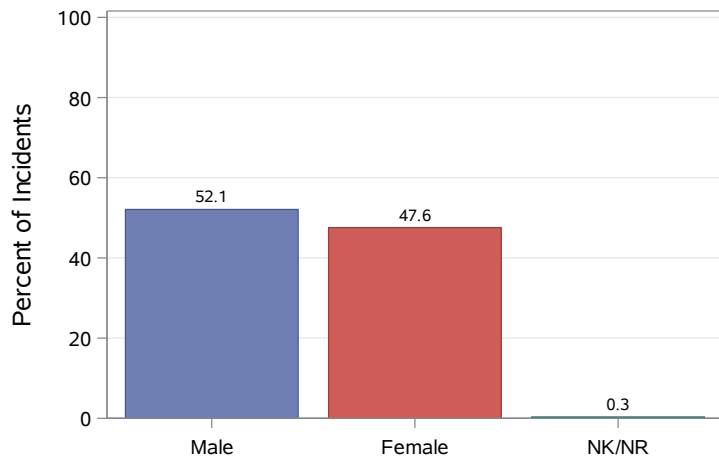
**Patient Age Category**



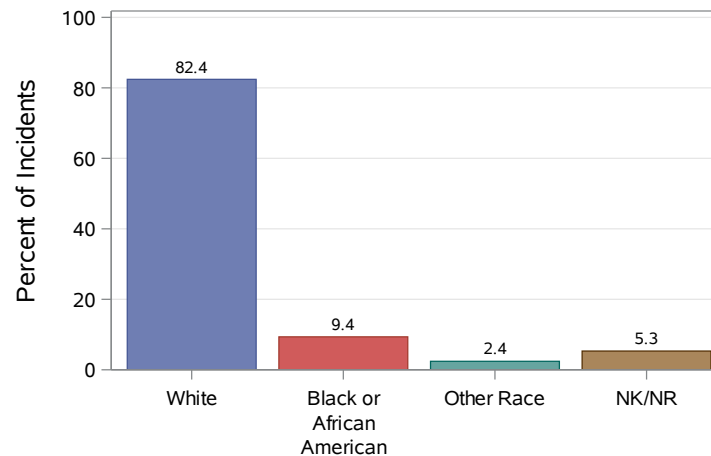
**Patient Age Group**



**Patient Gender**



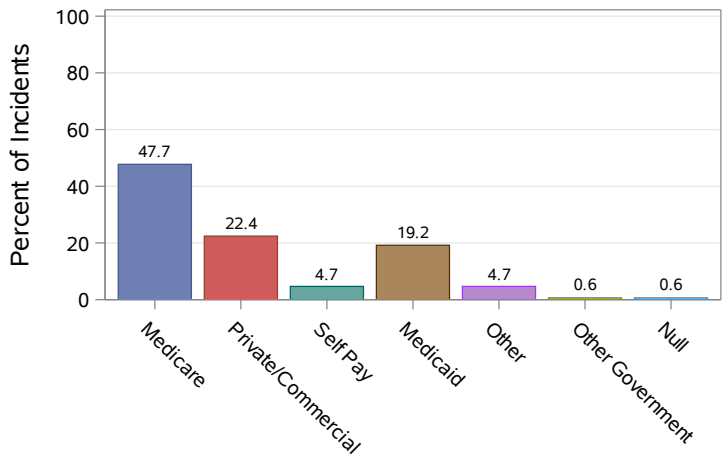
**Patient Race**



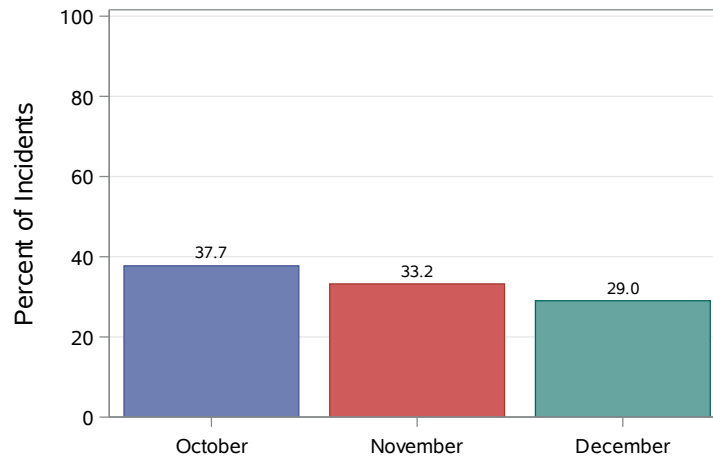
## District 2: Quarter 4 Indiana Trauma Registry Report

Statewide Incidents: 10031 Hospitals Reporting: 110 District 2 Incidents: 620 Hospitals Reporting: 7

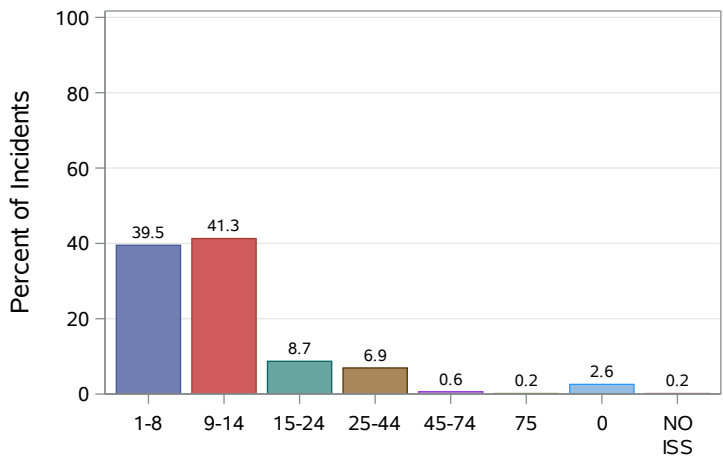
**Primary Payer Mix**



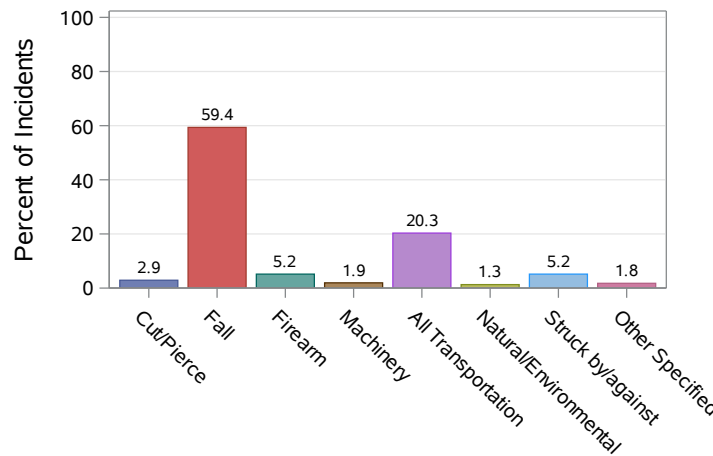
**Month of Admit**



**ISS Category**



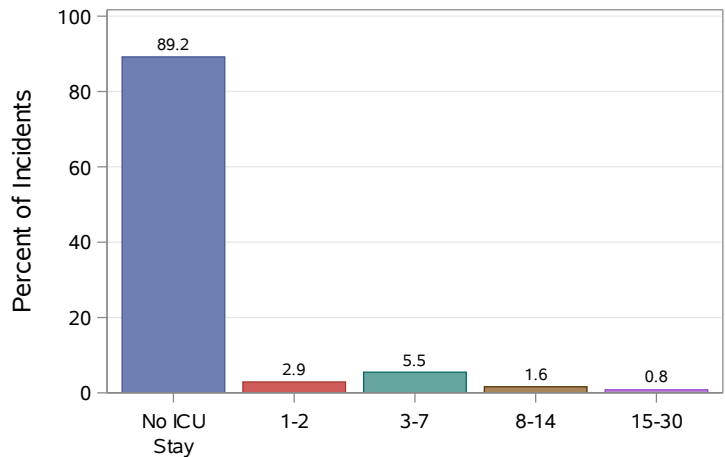
**Cause of Injury**



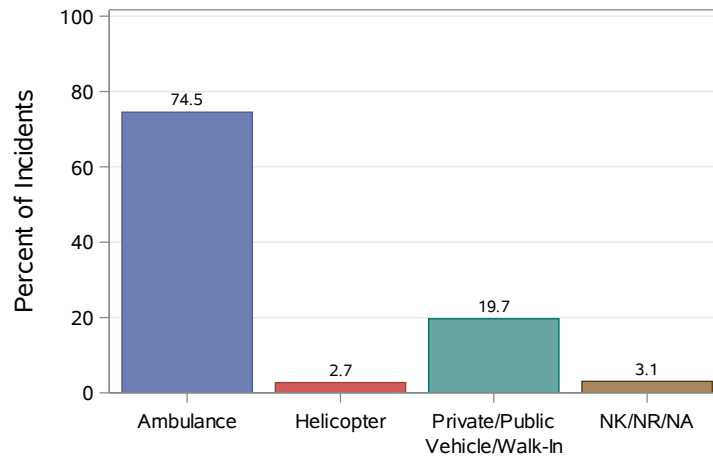
## District 2: Quarter 4 Indiana Trauma Registry Report

Statewide Incidents: 10031 Hospitals Reporting: 110 District 2 Incidents: 620 Hospitals Reporting: 7

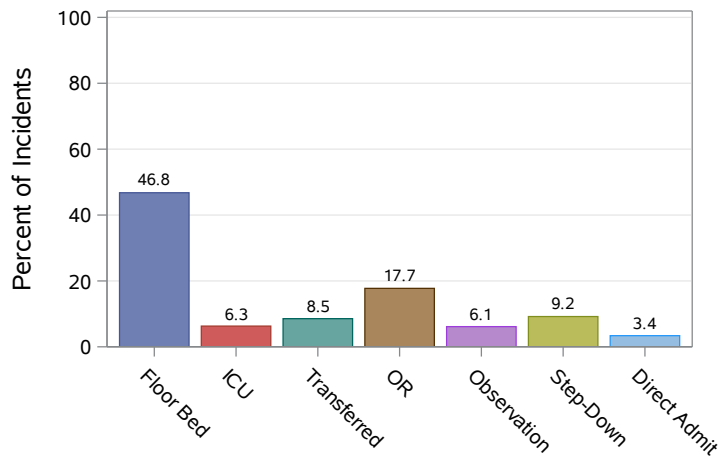
**ICU Length of Stay (Days)**



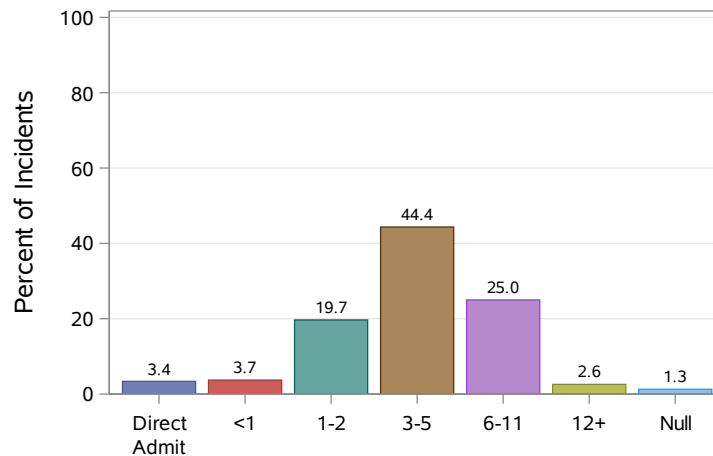
**Transport Mode**



**ED Disposition**



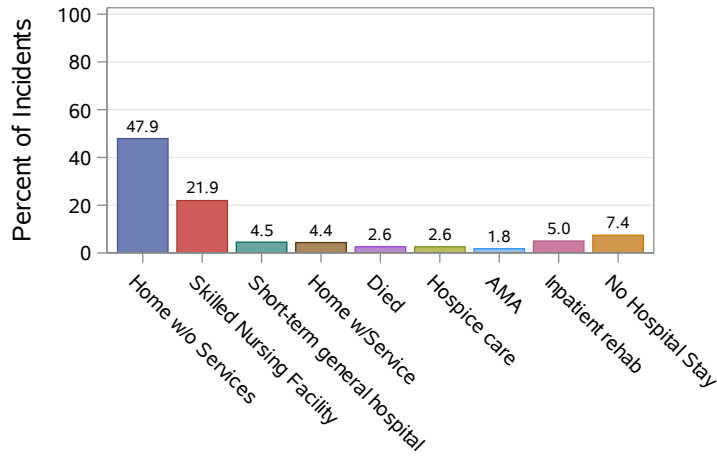
**ED Length of Stay (Hours)**



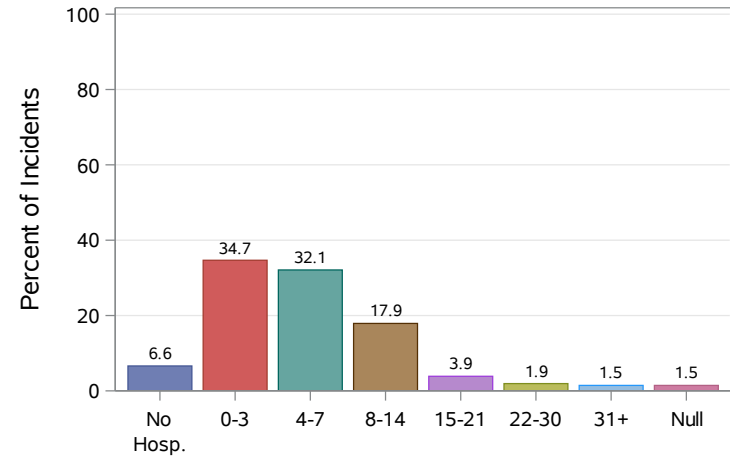
## District 2: Quarter 4 Indiana Trauma Registry Report

Statewide Incidents: 10031 Hospitals Reporting: 110 District 2 Incidents: 620 Hospitals Reporting: 7

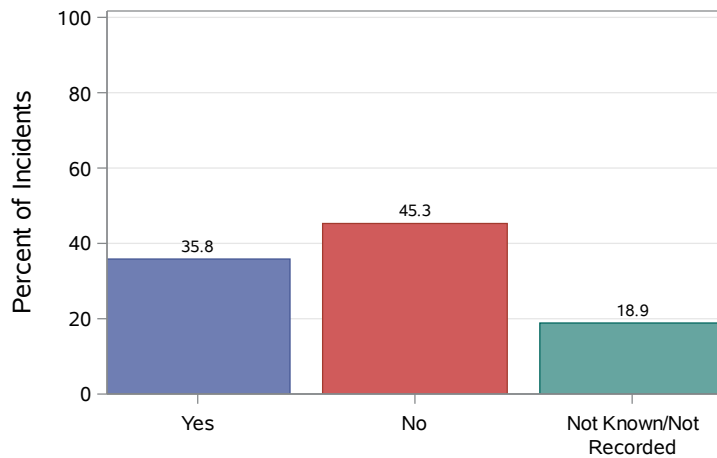
### Hospital Disposition



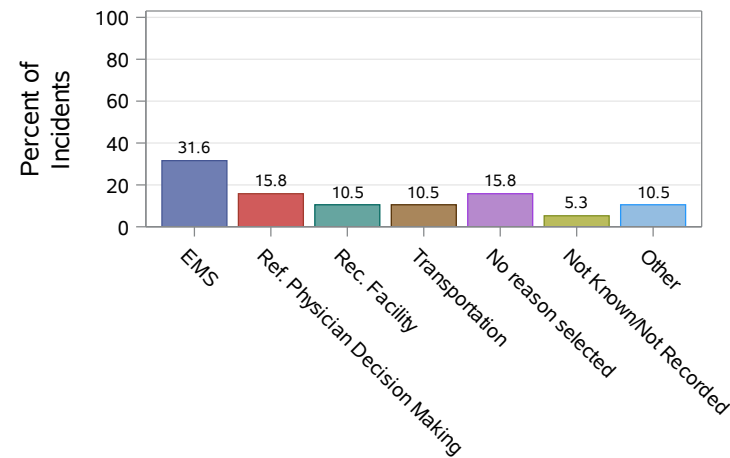
### Hospital Length of Stay (Days)



### Transfer Delay



### Transfer Delay Reason



## District 2: Quarter 4 Indiana Trauma Registry Report

Statewide Incidents: 10031 Hospitals Reporting: 110 District 2 Incidents: 620 Hospitals Reporting: 7

### ED Length of Stay Metrics

#### Overall (Minutes)

| Category           | Min. | Mean   | Max. | N    | Std.   |
|--------------------|------|--------|------|------|--------|
| District 2         | 2    | 306.45 | 1828 | 591  | 203.83 |
| Indiana            | 0    | 375.96 | 2457 | 9384 | 325.24 |
| Trauma I & II      | 2    | 359.46 | 2457 | 4532 | 324.18 |
| Trauma III         | 1    | 403.98 | 2301 | 2098 | 329.54 |
| Non-Trauma Centers | 0    | 385.75 | 2390 | 2604 | 324.92 |

#### Transfers Only (Minutes)

| Category           | Min. | Mean   | Max. | N    | Std.   |
|--------------------|------|--------|------|------|--------|
| District 2         | 67   | 356.83 | 1828 | 48   | 283.08 |
| Indiana            | 0    | 309.58 | 2390 | 1693 | 261.44 |
| Trauma I & II      | 42   | 259.75 | 1095 | 53   | 206.16 |
| Trauma III         | 31   | 279.46 | 2264 | 459  | 227.32 |
| Non-Trauma Centers | 0    | 324.21 | 2390 | 1111 | 277.70 |

#### By ISS Score (Mean Hours)

| Category           | 1-8  | 9-14 | 15-24 | 25-44 | 45-74 | 75   | NA   |
|--------------------|------|------|-------|-------|-------|------|------|
| District 2         | 5.60 | 5.21 | 4.77  | 2.53  | 2.72  | 0.20 | 4.75 |
| Indiana            | 6.47 | 6.56 | 5.80  | 3.56  | 2.14  | 1.13 | 5.78 |
| Trauma I & II      | 6.31 | 6.20 | 5.90  | 3.50  | 1.84  | 0.89 | 6.57 |
| Trauma III         | 6.74 | 7.06 | 5.81  | 4.10  | 4.71  | 1.54 | 3.60 |
| Non-Trauma Centers | 6.55 | 6.77 | 4.95  | 2.97  | .     | .    | 5.88 |

NA = No ISS Score

#### Critical Pat. Transfers Completed in < 2 Hrs

| Category           | Critical | Physiological Critical | ISS Critical |
|--------------------|----------|------------------------|--------------|
| District 2         | 51.96%   | 51.96%                 | 62.96%       |
| Indiana            | 46.56%   | 46.56%                 | 58.61%       |
| Trauma I & II      | 47.67%   | 47.67%                 | 59.47%       |
| Trauma III         | 43.33%   | 43.33%                 | 61.54%       |
| Non-Trauma Centers | 44.44%   | 44.44%                 | 52.63%       |